

**When you fly into Hood River,
you're not just landing at our
airport - you're entering our
neighborhood.**

Please keep in mind that hundreds of people live within a short distance of our airport. We all enjoy the same beauty whether it's from the air or on the ground. Be sensitive to this shared reserve of natural splendor and fly accordingly.

Contact Us

If you have any questions, comments or suggestions, please contact us:

Port of Hood River

1000 E. Port Marina Drive
Hood River, OR 97031
541 386-1645 • porthr@gorge.net



Ken Jernstedt Airfield
Port of Hood River
1000 E. Port Marina Drive
Hood River, OR 97031

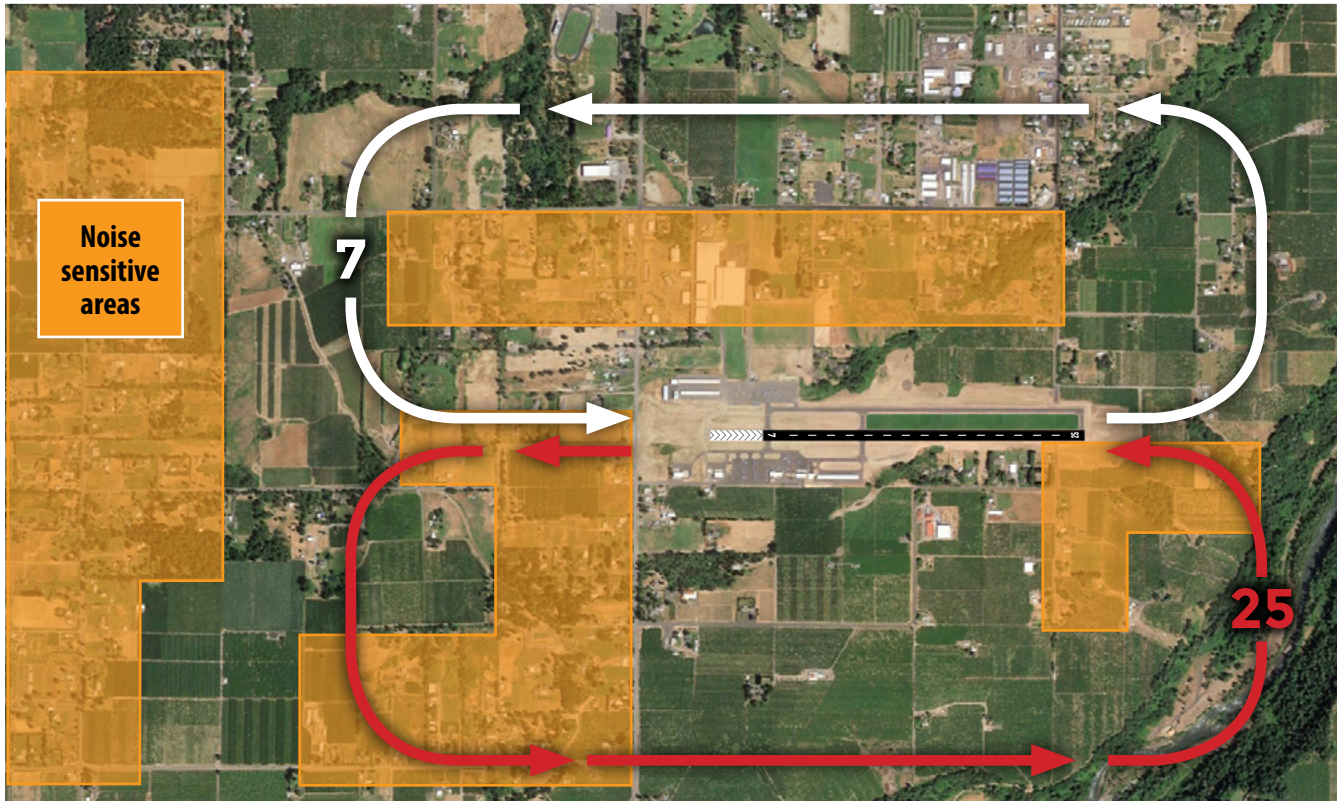
Hood River, Oregon
Ken Jernstedt
Airfield

FLY
FRIENDLY
PROGRAM

HELP KEEP OUR
AIRFIELD A FRIENDLY
NEIGHBOR



RECOMMENDED "QUIET" PROCEDURES



- Runway 7 is designated as the "Calm Wind" runway
- Runway 25, No turn before 1,500 MSL
- Maintain pattern altitude as long as practical
- For takeoff, accelerate to gain altitude as quickly as possible without compromising safety.

These recommendations are not intended to preempt the responsibilities of the Pilot In Command and should be followed as conditions and aircraft ability allow.



Please Be Aware of the following Conditions

Hood River airport has an active GLIDER community. Tow planes use a non-conforming pattern and turn right on departure for 25.

Hood River airport is typically a west wind airport and conditions may change quickly.

Wildfire operations occur and impact traffic at times.

There is a large population of historic aircraft and tailwheels that utilize this field. Please be courteous of aircraft abilities.

This program was collaboratively developed by: the local pilot community, non-flying public, the Airport Advisory Committee, local aviation businesses and the Port of Hood River.

